



Join the MSCPA CPA Ambassador Program

*Help Us Tackle the Pipeline Shortage by Volunteering for
High School Students Outreach*

The MSCPA is currently reestablishing a CPA Ambassador Program in our efforts to ease the pipeline shortage of accounting students. Please join our efforts by volunteering to visit high schools in your areas throughout the state.

Originally launched in 2003 by the AICPA, representatives from each state participated in the Ambassador Program. However, as time passed the program did not remain active. As an objective of the MSCPA Long-Range Strategic Plan, the Board of Governors voted to resurrect our Membership Committee to set the parameters and to oversee and track the program with plans to be on campuses this fall. Chapter Presidents (or a representative), along with others, have been asked to serve on the committee in order to blanket all areas.

MSCPA will supply the support tools, talking points, and guidance needed by members as they speak to classes or attend high school career fairs. CPAs will have the opportunity to emphasize the CPA profession with a consolidated message.

Want to Get Involved?

You can volunteer to be an CPA Ambassador and/or
a member of the Membership Committee by emailing
Noma Gillis at ngillis@ms-cpa.org.

Meet Your MSCPA Board of Governors

The MSCPA is excited to introduce the 2024-2025 Board of Governors, a dynamic group of leaders dedicated to advancing our profession. Their expertise and commitment will guide our organization through the coming year. Learn more about the new Board members on pages 5-7.

NOMINATE AN Outstanding Educator

The MSCPA Awards, Education & Scholarships Committee is seeking nominations for the Outstanding Educator Award for 2024-2025.

Each year the Committee requests nominations for selection of an educator who has made significant contributions as an accounting instructor. That individual is honored during the MSCPA Annual Business Meeting at Convention in June.

Nominations should be submitted in writing by **October 1, 2024** to be considered by the Committee. Send your nominations to Outstanding Educator, c/o MSCPA, 306 Southampton Row, Ridgeland, MS 39157 to the attention of Shawn Mauldin, Committee Chairman, or email kmood@ms-cpa.org. Please include nomination letter(s) and vitae.

IN MEMORIAM

MARTHA B. "MOLLY" NICKEY
Jackson, MS
Died August 16, 2024

MEMORIAL GIFT

To the
EDUCATION FOUNDATION
In memory of
SHERWIN WINSTON EASTERLING
Hattiesburg, MS
by
Jim Koerber
Hattiesburg, MS

MEMORIAL GIFT

To the
**POLITICAL ACTION
COMMITTEE**
In honor of
KAREN MOODY
JACK COPPENBARGER
Ridgeland, MS
In memory of
ROBERT NICKEY
Ridgeland, MS
by
Ed Jones
Pascagoula, MS

UPCOMING CONFERENCES

September 19
**HEALTH CARE
SERVICES**

September 26
NOT-FOR-PROFIT

October 23
INDUSTRY

November 1
**ACCOUNTING
EDUCATION**

November 21
**BUSINESS VALUATION &
LITIGATION SERVICES**

All conferences will be offered
in-person at the MSCPA in Ridgeland
and virtually. For complete details or
to register, visit [ms-cpa.org/education/
conferences](https://ms-cpa.org/education/conferences).



*Published
by the
Mississippi Society of
Certified Public Accountants*

306 Southampton Row
The Commons
Highland Colony Parkway
Ridgeland, MS 39157

PHONE: (601) 856-4244

FAX: (601) 856-8255

EMAIL: memberservices@ms-cpa.org

WEBSITE: www.ms-cpa.org

OFFICERS

Chairman

Tom Walker
JACKSON

Vice-Chairman/Chairman-Elect

Anita Goodrum
EUPORA

Treasurer

Philando Brown
JACKSON

Secretary

Lydia Windham
JACKSON

President/CEO

Karen Moody
RIDGELAND

The CPA Newsletter is the official publication of the Mississippi Society of Certified Public Accountants. The Newsletter invites articles of interest to the profession and gives credit to the author; however, it reserves the right to edit articles for correct spelling, wording and punctuation.

Opinions expressed are not necessarily the official policy of the MSCPA. Advertising is accepted in good faith that the product/services are of value stated.

Welcome New Members

ALEX ANTHONY

McKenzie CPA, PLLC
Madison, MS

JACY B. BARGER

Office of the State Auditor
Jackson, MS

DERREL J. BILSKY

Sayle, Sandifer & Johnson, LLP
Greenville, MS

ABNEY BREWER

Office of the State Auditor
Jackson, MS

BENJAMIN K. BREWER

Corbin & Biggs, PLLC
Ridgeland, MS

ASHLEY N. COLEMAN

Swain, Collins & Napp, PA
Meridian, MS

ALYNDA ELLINGBURG

Watkins, Ward and Stafford, PLLC
Philadelphia, MS

MELANIE R. HARRIS

Keene, Bourne, Haigler & Sanderson
Hattiesburg, MS

ROBIN T. MABERRY

BankPlus
Ridgeland, MS

ZACHARY E. PHILLIPS

Office of the State Auditor
Jackson, MS

MADELINE PIERONI

Madeline Pieroni
Greenwood, MS

JOSHUA R. SMITH

Ergon Inc.
Jackson, MS

BRITTANY B. STANFORD

Office of the State Auditor
Jackson, MS

KACREE WATERS

Linda H. Roberts CPA
Ocean Springs, MS



5442 Executive Place
Jackson, MS 39206

P: 844.833.MAIL (6245)
601.362.9192
F: 601.982.2656

Postage & Mailing Solutions <ul style="list-style-type: none"> • Postage Meters • Software Solutions • Folder/Inserters • Mail Accounting 	<ul style="list-style-type: none"> • Envelope Openers • Addressing/Tabbing • Shredders • Mailroom Furniture 	Copy / Fax / Print <ul style="list-style-type: none"> • Printers/Copiers • Managed Technology Services • Fax and Multi-Function • Network Device Management
<ul style="list-style-type: none"> • Document Management & Distribution • Scanning & Organizing • Search & Archival • Forms & Print Management 		

www.absms.com



SOAK UP SUMMER FUN WITH US!




www.ms-cpa.org

Member News

Bradley Floore Named 2024 Leadership Pinebelt Member



Bradley Floore

Bradley Floore, a senior manager specializing in financial institutions assurance at HORNE, recently earned recognition as one of the 2024 Leadership Pinebelt members by the Area Development Partnership. Leadership Pinebelt is a program aimed at nurturing emerging community leaders committed to enhancing the Greater Hattiesburg Area of Forrest, Lamar, and Perry Counties.

The program is designed to broaden the base from which emerging leadership is derived and to serve as a catalyst for increasing diversity among future leaders. Selection criteria include

demonstrated time commitment, community engagement, diversity, and a dedication to collaborative goals. The LEADERS Steering Committee meticulously evaluates each applicant, selecting members based on these standards. Being chosen for this program is widely regarded as an honor due to its rigorous and competitive selection process.

Bradley serves as the Co-Chair of the MSCPA Banking & Finance Committee and as Treasurer and board member of the Young CPA Network. Within HORNE, he primarily assists clients with external audit responsibilities and regulatory compliance matters, serving both publicly traded and privately held institutions. Bradley holds a Bachelor of Science in Business Administration in Banking & Finance, as well as Accounting, from The University of Southern Mississippi.

Rea, Shaw, Giffin & Stuart Announces Three New Partners

Rea, Shaw, Griffin & Stuart has named Noah Davis, John Oubre, and Shawna Post as its newest partners. The promotion of these individuals signifies the firm's dedication to nurturing talent and expanding its leadership base.



Noah Davis

Noah Davis, a proud Ole Miss alumnus, began his accounting career in 2019 with KPMG's State and Local Tax group in Nashville, TN. In 2021, Noah moved to his wife's hometown of Meridian and joined the tax staff at Rea, Shaw, Giffin & Stuart (RSGS). Over the last three and a half years in Meridian, Noah has seen his role at the firm grow exponentially, leading to his

recent promotion to partner. In addition to his responsibilities at RSGS, Noah served as the Treasurer for the Meridian Council for the Arts and as a board member of the MSCPA Young CPA Network. Currently, Noah is serving as the East Central Chapter representative on the MSCPA's Board of Directors, as well as the President of the East Central Chapter. Additionally, Noah is serving as the Millennial Chair of the MSCPA's Taxation Committee. Furthermore, Noah is a 2022 graduate of Leadership Lauderdale and the AICPA's Leadership Academy.



John David Oubre

John David Oubre, a proud alumnus of Mississippi State University began his accounting career in 2017 in Starkville before joining Rea, Shaw, Giffin & Stuart in 2019. While there, he earned his CPA designation, and has assumed increasing responsibility within the firm's tax department. He and his wife, Rebecca, have been married two years and reside in Collinsville.

He is a member of First Presbyterian Church of Meridian, and he is a 2023 graduate of Leadership Lauderdale. He is also an active member of the Rotary Club of Meridian.



Shawna Post

Shawna Post, a graduate of Mississippi State University, began her career in 2005 with Rea, Shaw, Giffin & Stuart, LLP specializing in auditing and assurance services. Over the years, she assumed responsibilities as Audit Manager prior to reaching partner status. Shawna has nearly 20 years of experience in auditing and assurance services for a wide variety of industries. She is also a graduate

of Leadership Lauderdale class of 2012. In addition, she serves as Treasurer of the Care Lodge Domestic Violence Shelter's Executive Board of Directors and is an active member and Treasurer of The Pursuit Church of Meridian.



WE WALK THE TALK.

CAMICO knows CPAs, because we are CPAs.

Created by CPAs, for CPAs, CAMICO's guiding principle since 1986 has been to protect our policyholders through thick and thin. We are the program of choice for more than 8,000 accounting firms nationwide. **Why?**



CAMICO's Professional Liability Insurance policy addresses the scope of services that CPAs provide.



Includes unlimited, no-cost access to specialists and risk management resources to help address the concerns and issues that you face as a CPA.



Provides potential claim counseling and expert claim assistance from internal specialists who will help you navigate the situation with tact, knowledge and expertise.

**Does your insurance program go the extra mile?
Contact us to learn more.**



CPA PROFESSIONAL LIABILITY INSURANCE AND RISK MANAGEMENT SOLUTIONS



CAMICO is MSCPA endorsed provider of CPA Professional Liability Insurance.



CAMICO Representative:
Stormy Blair, Vice President –
Association Programs
E: Stormy.Blair@bbrown.com
T: (985) 674-3886

Accountants Professional Liability Insurance may be underwritten by CAMICO Mutual Insurance Company (Rated A- (Excellent) by AM Best) or through CAMICO Insurance Services by one or more insurance company subsidiaries of W. R. Berkley Corporation (Rated A+ (Superior) by AM Best). Not all products and services are available in every jurisdiction, and the precise coverage afforded by any insurer is subject to the actual terms and conditions of the policies as issued. ©CAMICO Services, Inc., dba CAMICO Insurance Services. All Rights Reserved. For the latest Best's Credit Rating, access www.ambest.com.

MEET THE MSCPA

2024-2025 BOARD OF GOVERNORS

EXECUTIVE COMMITTEE



TOM WALKER
Chairman
Jones Walker LLP
Jackson



ANITA GOODRUM
Vice Chairman/Chair-Elect
Watkins, Ward & Stafford, PLLC
Eupora



LYDIA WINDHAM
Secretary
Municipal Energy Agency of Mississippi
Jackson



PHILANDO BROWN
Treasurer
MS Dept. of Finance & Administration
Jackson



JERRY GOOLSBY
Immediate Past Chairman
Retired
Jackson



SIM MOSBY
At-large Member
Gillon Christian Mosby PLLC
Natchez



ANNETTE HERRIN
At-large Member
Southern Bone & Joint Specialists PA
Hattiesburg



BILL TAYLOR
At-large Member
William F. Taylor, CPA
Taylor



KAREN MOODY
President/CEO
MSCPA
Ridgeland

The Society is governed by a Board of Directors consisting of the Chairman, Vice Chairman/Chairman-Elect, Secretary, Treasurer, and Immediate Past Chairman, together with fifteen members elected by the local chapters, three members elected at-large, a member appointed by the MSCPA Young CPA Network and the Board-elected member to the AICPA Council. Directors elected by local chapters serve two years. The Board meets four times per year.

CHAPTER DIRECTORS



STEVEN EILDERS
Central Chapter Director
BMSS, LLC
Ridgeland



EMILY HARRINGTON
Central Chapter Director
Mississippi Department of Transportation
Jackson



DONNA INGRAM
Central Chapter Director
Donna M. Ingram, CPA, PC
Vicksburg



JOHN MCCALLUM
Central Chapter Director
GranthamPoole PLLC
Ridgeland



MARY MARGARET WHITE
Central Chapter Director
HORNE
Ridgeland



ALLISON WILSON
Central Chapter Director
Metro Mechanical, Inc.
Bolton



FRED SUTPHEN
Delta Chapter Director
Orsborn, Sutphen & O'Neal, P.A.
Greenwood



NOAH DAVIS
East Central Chapter Director
Rea, Shaw, Griffin & Stuart LLP
Meridian



RANDA CRAIG
Gulf Coast Chapter Director
HORNE
Gulfport



TELA HEMENWAY
Gulf Coast Chapter Director
Baker, Hooker & Associates PLLC
Ocean Springs



CLAY RICHARDSON
North Central Chapter Director
T. E. Lott & Company
Starkville



HOLLIE BALLARD
Northeast Chapter Director
Nail McKinney, P.A.
Tupelo



ALLISON GARNER
Northwest Chapter Director
M & N Excavators Inc.
Oxford



BLAISE SONNIER
Southeast Chapter Director
University of Southern Mississippi
Hattiesburg



SCOTT ADAMS
Southwest Chapter Director
Silas Simmons, LLP
Natchez

YCPA Network



PEYTON GORDON
Young CPA Network
Immediate Past President
HORNE
Ridgeland

AICPA Council



CHERYL SYKES
AICPA Council
Cheryl Sykes CPA
Clinton

LIAISONS



ED JONES
State Board Advisory
Committee Chair
Jones CPA Firm, PLLC
Pascagoula



JOSH NORRIS
State Board Advisory Committee
Millennial Chair
LeFleur Financial
Jackson

WWW.WAVERLY-ADVISORS.COM

WEALTH MANAGEMENT
COMPREHENSIVE FINANCIAL PLANNING
CORPORATE RETIREMENT PLANS
INSTITUTIONAL CONSULTING



WAVERLY
ADVISORS

Waverly Advisors is a registered investment advisor that specializes in investment and wealth management solutions, offering collaborative investment, tax, estate and financial planning services to a diverse group of high-net-worth individuals, corporate retirement plans and institutional clients.

Waverly Advisors, LLC ("Waverly") is an SEC-registered investment adviser. A copy of Waverly's current written disclosure Brochure and Form CRS (Customer Relationship Summary) discussing our advisory services and fees remains available at <https://waverly-advisors.com/>. Please Note: The scope of the services to be provided depends upon the needs of the client and the terms of the engagement.

When **YOU** are surrounded by results...
SUCCESS FOLLOWS!



We'll sell YOUR practice for the
highest price and best terms.

Scan Here



DELIVERING RESULTS - ONE PRACTICE AT A TIME



**ACCOUNTING
PRACTICE SALES**
THE GLOBAL LEADER IN PRACTICE SALES

Lori Newcomer, CPA
& Tim Price, CPA
PNgroup@aps.net

888-553-1040
www.APS.net
MSCPA Member

ADVOCACY

MSCPA & AICPA Continue to Advocate for Accounting as STEM

On August 1, the AICPA and all 54 State CPA Societies, including Mississippi Society of Certified Public Accountants (MSCPA), sent a letter to the Department of Homeland Security (DHS) requesting DHS recognize accounting under the “T” for Technology in Science Technology Engineering Math (STEM) education.

The letter specifically requested that the “Accounting” Classification of Instructional Program (CIP) code be added to DHS’s STEM Designated Degree Program List. Included with the letter is an extensive whitepaper laying out the case in detail as to why accounting has always been and should be formally designated as a STEM profession by the federal government.

The whitepaper leans heavily into the new skills accounting students are acquiring to both use existing tools AND to develop new technology tools that drive change and advancement in the accounting profession. We anticipate DHS will release the updated STEM CIP code list next summer.



Board of Governors & Past Chairmen’s

Christmas Gala

**Friday,
December 13, 2024**

**Mississippi Sports Hall of Fame & Museum
Jackson, MS**



CLIENTS READY TO EXIT?

Business Sales
Valuations
Mergers & Acquisitions



Vince Vavrunek
Business Broker
601-421-3344
vvavrunek@tworld.com



TRANSWORLD
Business Advisors
Business Sales • Mergers & Acquisitions • Franchises



2024-2025 **Young CPA Network**

MEET YOUR MSCPA YOUNG CPA NETWORK **BOARD OF DIRECTORS AND COMMITTEE CHAIRMEN**



JOHN LULEY
Vice President/President-Elect
Matthews, Cutrer & Lindsay, P.A.
Ridgeland



ANDRES POSADA
President
Carr, Riggs & Ingram, LLC
Ridgeland



LANDON WEAVER
Secretary
Carr, Riggs & Ingram, LLC
Ridgeland



BRADLEY FLOORE
Treasurer/Conference Committee Co-Chair
HORNE
Hattiesburg



KARIS PANNELL
At-Large Board Member
Days of Service Co-Chair
Byrne Zizzi CPA, PLLC | Tupelo



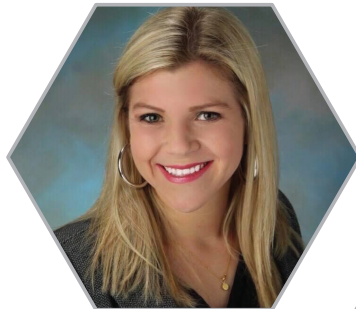
KATIE HUTSON
At-Large Board Member
Days of Service Chair
Harper, Rains, Knight & Co. | Ridgeland



BROOKE STANLEY
At-Large Board Member
Events Co-Chair
GrahamPoole PLLC | Ridgeland



KATIE HORTON
At-Large Board Member
Conference Committee Co-Chair
FORVIS Mazars, LLP | Jackson



LAUREN WRAY
At-Large Board Member
Events Committee Co-Chair
KPMG LLP | Jackson



COLE MOSBY
At-Large Board Member
Gillon Christian Mosby PLLC
Natchez



PEYTON GORDON
Immediate Past President
HORNE
Jackson

YCPA NETWORK HOLDS BOARD MEETING & COMMITTEE DAY

The MSCPA Young CPA (YCPA) Network held its annual Board Meeting and Committee Day on July 31, at the MSCPA Training Center in Ridgeland and virtually. YCPA Committee members discussed their YCPA Network Events, Days of Service, and Conference Committees for 2024-2025. They also elected new officers.



Ready to Retire Sooner Rather Than Later?

**MATTHEWS
CUTRER and
LINDSAY, P.A.**
CERTIFIED PUBLIC ACCOUNTANTS

Whether you're actively considering retirement or planning to transition your accounting firm in the future, we're here to support you every step of the way. Reach out to Charles Lindsay at **601-898-8875** or email **charles.lindsay@mcl.cpa** to begin exploring your confidential options today. To learn more about us, visit

CHAPTER NEWS

GULF COAST CHAPTER

The MSCPA Gulf Coast Chapter organized an educational and insightful Port Tour and Economic Impact Discussion on July 24, at the Gulfport Port. The event featured **Hannah Milliet** as the keynote speaker. Members of the chapter and guests embarked on a comprehensive tour of the port facilities, gaining firsthand experience of the operations and logistics involved.

About the Port of Gulfport

Established in 1902, the Mississippi State Port Authority at Gulfport is primed for growth after a \$1 billion restoration project reached completion in 2022. The Port of Gulfport recently signed an agreement with Ports America, the nation's largest stevedoring

company, which includes an additional \$43 million investment into the development of a currently vacant terminal on the Port, including the purchase of a new crane.

The Port of Gulfport is centrally located on the Gulf of Mexico, with easy access to Interstate 10, excellent rail connections, and the ability to service a majority of the US market within 24 hours. As the second largest U.S. importer of green fruit, Gulfport offers a strong market for refrigerated cargo, with established weekly vessel calls from Central America and thriving domestic and international business connections.

Photos Credit: The Mississippi State Port Authority at Gulfport



Licensed to Practice in Arkansas, Georgia, Mississippi, and Tennessee. Learn more about our firm at WWW.BBJ-LAW.COM



BARNES, BAILEY & JANOUSH, P.A.

Over 75 years of combined experience.

- Estate & Trust Planning
- Probate
- Estate & Trust Litigation
- Asset Protection
- Mergers & Acquisitions
- Federal and State Tax Audit and Litigation
- Business Planning and Succession
- Partnership, Corporate and Individual Tax Planning
- Charitable Giving
- Exempt Organizations



Trip Barnes - J.D., LL.M.

Lacey Bailey - J.D., LL.M.

Will Janoush - J.D., LL.M.



Jackson Office - 5 River Bend Place, Suite A, Flowood, Mississippi 39232 - Phone: (601) 981-6336
Gulfport Office - 1105 30th Avenue, Ste. 204, Gulfport, Mississippi 39501 - Phone: (228) 868-0197

SOUTHWEST CHAPTER

The MSCPA Southwest Chapter held its annual CPE Day on July 16, at the Natchez Grand Hotel. Attendees heard the following CPE topics and speakers:

- **Private Wealth Advisor for Ameriprise; Distribution Options for Workplace Transitions; From Simple to Sophisticated: Small Business Retirement Plans; and Strategies to Maximize Social Security**

Forrest A. Johnson III, CFA, CFP, Private Wealth Advisor, Ameriprise

- **Current Fraud Cases**

Donna M. Ingram, CPA, CFE, CFF



Photo Credit: The Natchez Grand Hotel

CALLING ALL CHAPTERS!

Got News?

Share it with us!

Got an event, success story, or noteworthy news from your chapter? Share with us and inspire others. Your stories are the heartbeat of our organization!

SEND YOUR NEWS TO ATHORN@MS-CPA.ORG



Do you want to grow your business?

"85% of businesses grow faster with SBA & Equipment Loans. Help your clients thrive."

- SMALL BUSINESS LOANS
- EQUIPMENT FINANCING
- WORKING CAPITAL

www.firstresourcecapital.com

(844) 840-3220



FIRST RESOURCE CAPITAL



CPACHARGE

AN AFFINIPAY SOLUTION



Member
Benefit
Provider

“CPACharge has made it easy and inexpensive to **accept payments via credit card**. I'm getting **paid faster**, and clients are able to pay their bills with **no hassles**.

– Cantor Forensic Accounting, PLLC

Trusted by accounting industry professionals nationwide, CPACharge is a simple, web-based solution that allows you to securely accept client credit and eCheck payments from anywhere.



22% increase in cash flow with online payments



65% of consumers prefer to pay electronically



62% of bills sent online are paid in 24 hours



**PAYMENT
RECEIVED**

YOUR FIRM
LOGO HERE

Client Invoice
#0123-A

Your Client

**** * 9995 ***

TOTAL: \$3,000.00

VISA
eCheck **DISCOVER**

POWERED BY
CPACHARGE

PAY CPA

Get started with CPACharge today

• cpacharge.com/ms-cpa
866-327-0321

CPACharge is a registered agent of Synovus Bank, Columbus, GA., Fifth Third Bank, N.A., Cincinnati, OH, and Wells Fargo Bank, N.A., Canadian Branch, Toronto, ON, Canada.

AffiniPay customers experienced 22% increase on average in revenue per firm using online billing solutions

ANNUAL HEALTH CARE SERVICES CONFERENCE

Thursday, September 19, 2024

This event is designed to meet the specific interests of CPAs and financial professionals who provide services to hospitals, physician practices, and long-term care facilities.

Co-sponsored by the Mississippi HFMA

Credits: 8 | Member & Non-Member: \$215

Non-CPA Medical Providers: \$100*

**Non-CPAs who do not need CPE and work for medical providers.
To register at the non-CPA discounted cost, call 601-856-4244.*

*In-Person and
Livestream at the
MSCPA Training
Center in Ridgeland*

AGENDA

7:45 a.m.

BREAKFAST & NETWORKING

8:30 a.m.

KEYNOTE ADDRESS: HFMA NATIONAL UPDATE

Andrew Donahue, Healthcare Financial Management Association (HFMA)

9:30 a.m.

ADVANCED ANALYTICS & TRANSFORMING HEALTHCARE

Bryan Allison, XCelebrate Technology & Consulting, LLC; and Austin Miller, Frazier & Deeter

10:45 a.m.

BREAK

11:00 a.m.

MEDICAID UPDATE

Jennifer Wentworth, Mississippi Division of Medicaid

12:00 p.m.

LUNCH BREAK

12:45 p.m.

RURAL EMERGENCY HOSPITAL UPDATE

Wendell S. Hariel, Carr, Riggs & Ingram, LLC; and Shenika Russell, Perry County General Hospital

2:00 p.m.

A&A UPDATE

Florence Bauer, HORNE; Jason Brooks, Watkins, Ward and Stafford, PLLC; and Baxter Howell, Forvis Mazars

3:15 p.m.

BREAK

3:30 p.m.

POLITICAL UPDATE

Kevin Blackwell, Mississippi State Senator

4:30 p.m.

DOOR PRIZES & ADJOURN

To register, visit www.ms-cpa.org.

GOLD SPONSORS



SILVER SPONSORS



BRONZE SPONSORS



**LIVE BETTER.
BANK BETTER.**

**OPEN YOUR ACCOUNT
ONLINE**

debit card accounts
mortgage lending
home equity
auto lending
credit cards
personal lending
financial counseling
6,000+ branches
35,000+ atm's

Apple Pay GPay pay



MISSISSIPPI FEDERAL
CREDIT UNION



MSCPA Annual NOT-FOR-PROFIT Conference

IN-PERSON AND LIVESTREAM
at the MSCPA Training Center in Ridgeland

Agenda

THURSDAY
**SEPT
26
2024**

- 7:45 a.m. **Breakfast & Networking**
- 8:30 a.m. **Building Places People Want to Work**
Kassi Rushing, Kassi Rushing Consulting
- 9:30 a.m. **Unrelated Business Taxable Income**
Brian Yacker, Baker Tilly
- 10:20 a.m. **Break**
- 10:30 a.m. **Functional Expense Allocations: Implications and Reporting**
Brian Yacker, Baker Tilly
- 11:20 a.m. **Lunch Break**
- 12:10 p.m. **Panel Discussion: Hot Topics in Not-for-Profits**
Jane Alexander, Community Foundation for Mississippi; Amanda Crawford, Mississippi Nurses Foundation; John Damon, Canopy Children's Solutions; Matt Milliman, Mercy House Adult & Teen Challenge; and Lee Stringer, 5th Squad
- 1:10 p.m. **Mississippi Secretary of State Update**
Tanya Webber, Charities Division of the Mississippi Secretary of State's Office
- 2:00 p.m. **Break**
- 2:10 p.m. **Ahead of the Rising Tide of Expectations: A Smart and Healthy Approach to Excellence in Non-profits**
John Damon, Canopy Children's Solutions
- 3:00 p.m. **How to Prepare for an Audit**
Donna Ladd, Mississippi Free Press; Maura McDevitt, BMSS, LLC; and Steven Mulhollen, Mississippi College
- 3:50 p.m. **Build a Finance Team that Propels Your Non-profit, Instead of Paralyzing It**
Eric B. Tisdale, BT Advisors
- 4:40 p.m. **Door Prizes & Adjourn**

Get the industry-specific insights you need to maintain a strong organization for you or your clients and get informed about unique challenges facing not-for-profit organizations at this annual event.

Register Online at
WWW.MS-CPA.ORG

SILVER SPONSORS

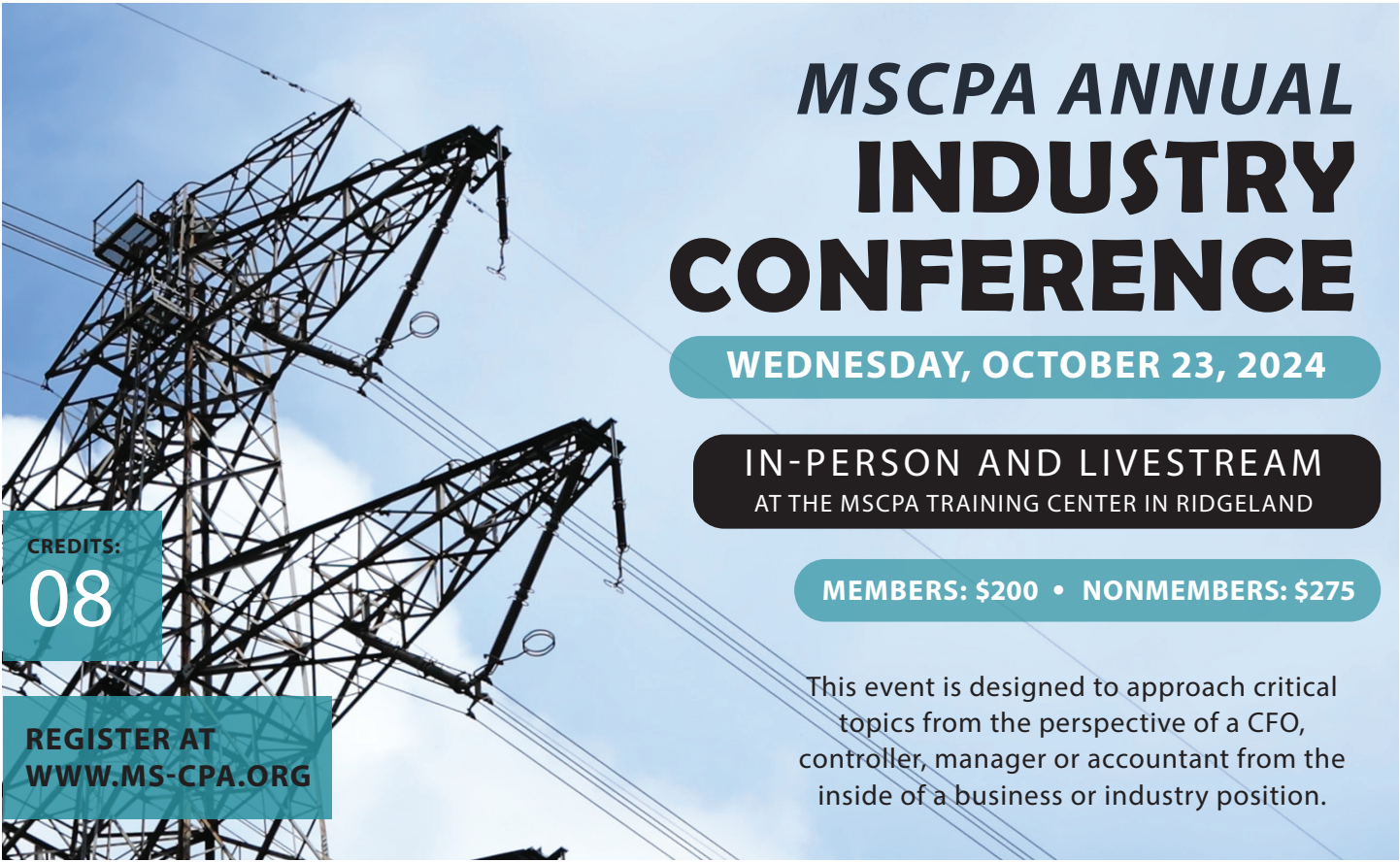


BRONZE SPONSORS



CREDITS: 8

COST: \$125



MSCPA ANNUAL INDUSTRY CONFERENCE

WEDNESDAY, OCTOBER 23, 2024

IN-PERSON AND LIVESTREAM
AT THE MSCPA TRAINING CENTER IN RIDGELAND

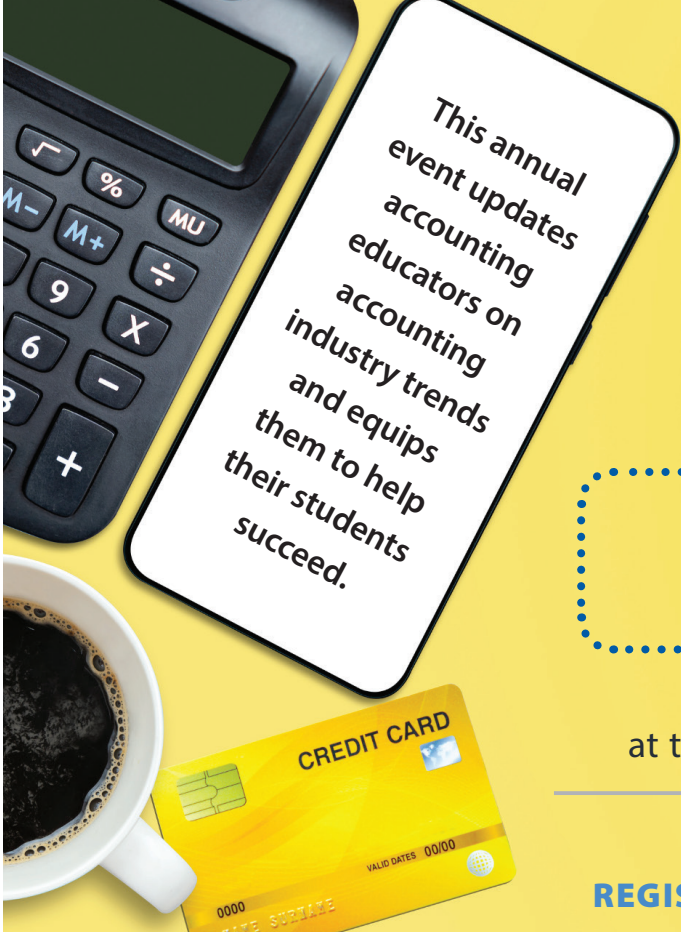
MEMBERS: \$200 • NONMEMBERS: \$275

This event is designed to approach critical topics from the perspective of a CFO, controller, manager or accountant from the inside of a business or industry position.

CREDITS:

08

REGISTER AT
WWW.MS-CPA.ORG



MSCPA ANNUAL ACCOUNTING EDUCATION CONFERENCE

FRIDAY
November 1st

IN-PERSON AND LIVESTREAM
at the MSCPA Training Center in Ridgeland

CREDITS: 8 COST: \$100

REGISTER ONLINE: WWW.MS-CPA.ORG

Mississippi Society of Certified Public Accountants
306 Southampton Row
Ridgeland, MS 39157
www.ms-cpa.org



Phone: 601-856-4244
Fax: 601-856-8255
Toll Free (inside Mississippi): 1-800-772-1099
Email: memberservices@ms-cpa.org

2024-2025 DUES NOTICE REMINDER

MSCPA MEMBERSHIP YEAR JULY 1, 2024 THROUGH JUNE 30, 2025

ANNUAL DUES

Annual dues billed is based on your prior year member level. If your member level has changed, please contact Stephanie Edwards, MSCPA Director of Finance, at 601-856-4244 to make an online payment.

Dues not paid by October 1 are past due and must include a \$25.00 late fee. After October 1, members who have not paid their dues will no longer receive member benefits including discounts on CPE.

To Pay Online

Go to <https://www.ms-cpa.org/membership/pay-dues>.

To Pay by Check

Mail your dues notice and check made payable to: Mississippi Society of CPAs, 306 Southampton Row, Ridgeland, MS 39157.

To Pay by Fax

Send a completed dues notice with credit card information to MSCPA at 601-856-8255.

Firm Admins

Firm admins can print or pay firm employees dues. Contact Noma Gillis, ngillis@ms-cpa.org, to be added as a firm admin.

payment success



Work for a
**Top 100 Advisory
and CPA Firm**
That Still Feels
Like Family.

Join the BMSS Family.

ALABAMA: Birmingham,
Gadsden & Huntsville
MISSISSIPPI: Ridgeland



www.BMSS.com | (833)CPA-BMSS



Mississippi Society of
Certified Public Accountants
and its Education Foundation
306 Southampton Row
Ridgeland, MS 39157

CLASSIFIEDS

YOUR PRACTICE WANTED: Thinking about selling your practice? Accounting Practice Sales delivers results, bringing you the best price, optimal terms, and a buyer who represents an ideal fit for your clientele. Contact us today for a confidential discussion.

PRACTICES FOR SALE:

- Pascagoula area Enrolled Agent grossing \$220K *Available*
- Birmingham, AL tax practice grossing \$300K *New*
- Birmingham, AL CPA grossing \$470K *New*
- Nashville CPA grossing \$745K *Sale Pending*
- South of Knoxville, TN CPA grossing \$425K *Available*
- Dyersburg, TN area CPA grossing \$320K *Available*
- Upper Cumberland, TN CPA grossing \$975K *Available*
- Knoxville CPA grossing \$515K *New*
- Okaloosa County, FL (western Panhandle) CPA grossing \$365K *Available*
- Panama City Beach, FL CPA grossing

\$205K *Available*

- Pensacola, FL Enrolled Agent grossing \$130K *Available*

For more info on any of these listings or to sell your practice, contact Lori Newcomer, CPA and Tim Price, CPA at (888) 553-1040 or PNGroup@APS.net, or visit www.APS.net.



SELLING YOUR ACCOUNTING FIRM IS

COMPLEX: Accounting Biz Brokers can make it simple. We understand every practice is different. That's why we offer a personalized approach to selling and we respect your need for confidentiality throughout the process. With over 29 years combined experience, our brokers know your market and work hard to bring you the win-win deal you are seeking!

PRACTICES FOR SALE:

- MS Gulf Coast – Gross \$625K NEW
- Little Rock, AR – Gross \$2.38M NEW
- Huntsville, AL – Gross \$1.2M NEW
- Western Knoxville, TN Area – Gross \$435K
- North MS/Metro Memphis – Gross \$1.25M – SOLD

- Rankin County, MS – Gross \$518K – SOLD
- East Memphis Suburb – Gross \$950K – SOLD
- Memphis, TN – Gross \$708K – SOLD
- NE MS Tax/Bookkeeping – Gross \$850K – SOLD

Contact Kathy Brents, CPA CBI today for a free no-obligation consultation, 501-514-4928 or visit our website, www.AccountingBizBrokers.com.



TAX ACCOUNTANT: The Burgess Group, PA, a Flowood, MS CPA firm, is seeking an ambitious Senior or Manager level Tax Accountant to join our team. Candidate needs a strong background in public accounting tax preparation and / or tax return review. This position offers the opportunity to work on diverse projects, complex returns, and work toward ownership in the firm. Resumes may be sent confidentially to bburgess@burgessgroup.net.